

# FINCH NEWS

April 2016

A Publication for Finch College Alumnae and Friends



## MORE GREAT NEWS ABOUT OUR FINCH SCHOLARS



Derya Lane

Remarkable! Amazing! Industrious! Exemplary! Incredible! Our scholarship recipients continue to be all this and more!. "Hyperbole," you say. Well, before making any judgment, read on.

As our University of Pennsylvania pre-law student, **Derya Lane**, prepares for her spring LSAT exam, she is also serving as the Vice-President of Membership of the John Marshall Pre-Law Honor Society, Associate Editor for the Penn undergraduate Law Journal, and is an active participant in the Big Brother/Big Sister Program of Philadelphia, mentoring students in the local public schools. If that isn't enough, Derya is also a research assistant for both the Wharton Business Management and the Legal Studies and Business Ethics Departments. Did I mention that very shortly she will begin applying to law schools?



Chu May Paing

Meanwhile, our chemical engineer major, **Emily Barnes**, is distinguishing herself at New Jersey's Rowan University, where she is an active member in the Society of Women Engineers Club and the AICHE, a club for Chemical Engineers. (It is no surprise that Emily writes, "My favorite classes are the Sophomore Engineering Clinic and Microeconomics.") Emily is not only a Finch Scholar, but also a Welsh Society of Philadelphia Scholarship Winner. Eager to put her classroom knowledge to work, last fall Emily applied for a summer internship at General Mills. Recently, the company invited her back for a second interview, and Emily is very hopeful to be a "Team Leader Assistant" come June.

**Chu May Paing's** favorite class (among

five) during her fall semester at Queens College was "Language, Culture, and Social Diversity." She enjoyed the unique opportunity of working with students from Barcelona, exploring various sociolinguistic issues such as racism through language, language and gender, immigration, cross-cultural miscommunication, and heritage language maintenance. Also pursuing an "Honors Minor" in social sciences, Chu is preparing to conduct a one-year research project in Southeast Asian Immigrant Language Maintenance in New York City. For her "Linguist-Anthropology discipline," Chu will be collecting data through surveys, interviews, and fieldwork in Southeast Asian communities throughout New York City.

With French being her other minor, Chu is also actively engaged in the Queens College French/Francophone Club. This coming year, the club will be producing French/Francophone sites in outer boroughs of NYC. As a site reviewer, Chu will visit the sites and write the reviews that will then be published both as a physical guidebook and as an online platform via the Queens College website, Facebook, and Instagram and with Columbia University and New York University. But there's more! To further refine her proficiency in French, this summer Chu will be studying "advanced French" in Paris. This past year, she was named a finalist for the Asian/Pacific Islanders and Asian American Scholarships, funded by the Department of Education as well as private corporations such as FedEx and Coca Cola, and she awaits the decision.

Finch Scholar **Vanessa Cardona** is very happy to be attending George Washington University in our nation's capital. She is especially passionate about studying the ancient Greek language and reading works such as Homer's Iliad in its origi-

*Continued on next page* ▶

## SAVE THE DATE FOR 22<sup>nd</sup> ANNUAL JESSICA COSGRAVE AWARDS

The 2016 Jessica Cosgrave Awards will take place on **Tuesday, May 17**, at the Cosmopolitan Club, 122 East 66th Street, New York City. Reception is at 6 PM, awards at 7 PM, and dinner at 8 PM. Dr. Gail O. Mellow, President of LaGuardia Community College, is to speak at the awards event. Be sure to mark your calendar for this major fundraiser of the Finch College Alumni Association Foundation Trust. You should also plan on attending the fun-filled cultural and social events during the weekend of May 13 preceding this event. Details can be found in the Cosgrave Awards invitations, which have been mailed. For more information, please contact **Virginia Wattiker Sheerin** (212-605-5560; virginiasheerin@gmail.com) or **Ceil Gavin Ainsworth** (212-288-5653; ceilains@aol.com).

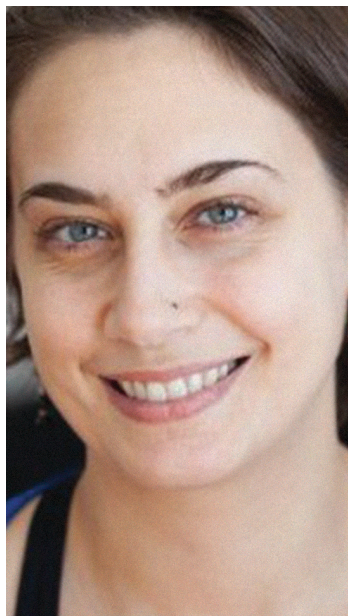
*It's not too early to nominate potential recipients for the 2017 Cosgrave Award. The instructions and nomination application can be downloaded at [www.FinchCollege.org](http://www.FinchCollege.org) by clicking on the Cosgrave Award on the left side of the home page.*



Zineb Bouizy



Cristina Mihailescu



Emilie Unterweger



Amanda English

nal language. However, chemistry remains her primary focus. Still, it's not all academic challenges for Vanessa. Last fall she joined the University's Cross Country Club, and shortly after the fall semester began, she earned her second Spartan Race Trifecta. She wrote that this was her "second year running Spartan Races, and it was the toughest race series so far." No doubt, the FBI will be duly impressed by Vanessa's academic feats as well as her athleticism as they review her application for a summer internship. Luckily, whatever victories might be coming her way, Vanessa will be sharing good news with her new Finch mentor, Finch College Alumna and Washington, DC resident, Mary Beth Baker Busby.

Another of our Queens College students, **Hyo Jung Shin**, is enjoying quite an eclectic academic schedule this school year. While chemistry and research currently appear to remain her career plan, this Finch Scholar (already a distinguished presenter at several prestigious research conferences to date) is now giving equal focus to psychology and honors literature. Her favorite classes are microbiology and psychopathology. Last summer she secured a chemistry internship.

I think the jury is still out about this young woman's future choices. Sounds like "the sky's the limit."

Our Hunter College graduate, **Phurkima Sherpa**, has made a very bold career move this year: She just joined The US Army! She completes basic training very soon (which she reports was challenging but doable) and will be working as an emergency medic (healthcare specialist). Her service to our country offers Phurkima the opportunity to help her parents financially, attain American citizenship, and full tuition for a Masters Program in Forensic Science. Also, Phurkima's dream is to work as a forensic scientist for our government. Certainly, the next couple of years should prove advantageous for her "long-term" career plans. I know we all wish Phurki-

ma a very safe and rewarding experience and, of course, want to hear about all her adventures.

Seems incredible, but **Zineb Bouizy** will graduate this spring from the Grove School of Engineering at the City College of New York. Over the past two years, Zineb received multiple scholarships, honors, and competitive national internships. She made her mark as President of City College of New York's "Engineers Without Borders" chapter and now is exploring opportunities for a PhD in civil engineering while she begins her career in the field. One of the very first Finch Scholars to become a member of our Finch Foundation Board, Zineb is about to lead our Foundation in another "first" as she becomes the very first Finch Scholar to become an official Finch Mentor to Emily Barnes, who is currently studying chemical engineering at Rowan University. Zineb will soon be joined in this endeavor by former scholars and now career women **Danielle Jablonski** (a current Finch Board Member), **Lisa Fredsall**, and **Dr. Sybille Ngo Nyeck**, who just joined our Finch Mentor Program and who will soon be matched with current scholars.

Our dedicated social worker in training, **Shaumane Paulk**, continues to make the most of her classroom instruction (at Ohio State University) and watch it work in real life. Last fall, Shaumane was one of only eight selected to participate in her school's special winter break program called "Ohio State Alternative Break Program, Buck-I-Serve." Along with her team, she ventured off to Clearwater, Florida, to work with the Pinellas County Habitat for Humanity. Her team built two homes and did everything from painting to hanging drywall. (Yes, our Finch Scholars do it all!)

Sustainable Environment major, **Cristina Mihailescu**, once again, made Dean's List at Columbia University, this time for the fall 2015 semester where she was delighted to connect with two other Finch Scholars on the school's

campus. She says, "It is really incredible to have a support system of women and Finch Scholars at Columbia."

During the past school year, **Emilie Unterweger** began volunteering as a peer educator at Columbia University's Sexual Violence Response Center. Prior to certification, candidates must complete a 40-hour training session. Once certified, peer educators are eligible to provide workshops to college constituents on different topics concerning sexual violence. In addition, Emilie will be helping to develop new workshops and preparing larger events for Domestic Violence Awareness Month and Sexual Assault Awareness Month for the Columbia University community.

**Amanda English** finished her 2015 studies at Utica College on a glorious note. While admittedly nervous she "wouldn't make the grade" at a four-year school, she is now an academic "star" at Utica with a 3.63 GPA and made Dean's List "her first time up at bat." If that's not enough to put her in a celebratory mood, Amanda just became engaged to her boyfriend of 10 years. Time to pop open the champagne! Wedding plans are in the works for July 2017 following her May 2017 graduation.

So, I rest my case. It is no exaggeration! Our Finch Scholars are exceptional not just because they are "book smart" and excel in all their academic pursuits – winning awards, earning scholarships, and "snagging" coveted internships year after year – but also because each and every one beat the odds and defied real-life adversity. They work hard, dream big, persevere, and give back to their communities. Without a doubt, our scholars are truly a credit to us all. I ask you: Who better to continue the Finch legacy than smart, competent, energetic, determined women who simply won't take no for an answer?

*Article: Eileen Bluestone Sherman*

# FULL SLATE OF FINCH FALL 2015 EVENTS



Finch alumnae on the visit to Philip Johnson's Glass House. Back row (left to right): Lois M. Ziegler, Natalie Skeet, Frances F. Tompkins, Suzanne Nason, Rena N. Crisp, Dr. Janice Lieberman, Nina D. La Bruna, Susan A. Mintz, hostess Suzanne S. Salomon, Ceil G. Ainsworth, Susan R. Reed, and Denise M. Decker; front row (left to right): Virginia H. Miller, Joy Correge, Carol B. Ross, Margaret S. Nakamura, Joan K. Bick, and Marjorie Schulman.

Fall 2015 was filled with fabulous sold-out events, bringing Finch alumnae and friends—old and new—together to enjoy each other's company, and to see and experience outstanding architecture, artwork, and music. In this spirit of camaraderie and generosity, we netted nearly \$4000 from our fundraising activities to benefit the Finch College Alumni Association Foundation Trust scholarships.

The Fall season also was active on the west coast, with a luncheon hosted by Alba Farber Francesca that raised \$1000 for the FCAFT scholarship fund.

## *Philip Johnson's Glass House*

On October 17, a perfect, crisp autumn Saturday, a large group of Finch alumnae and friends gathered at the visitor's center of architect **Philip Johnson's Glass House** in downtown New Canaan, Connecticut. Finch alumna **Suzanne Stern Salomon** (Cosgrave Honoree 2005), who organized the visit and hosted the extraordinary luncheon that followed, addressed the gathering. Suzanne was acquainted with the acclaimed architect and, along with our docents, recounted stories of his life. Philip Johnson, who died in 2005, had been a founding member of the "Harvard Five," a group of avant-garde architects who settled and began their careers in New Canaan in the 1940s, building 100 homes, four of which (including Johnson's Glass House) are listed in the US National Register of Historic Places. A con-



Inside "Da Monsta": Susan Rubenstein Reed (left) and Joy Correge (right) studying the John Chamberlain sculpture.

tinuous photomontage of Johnson's life and work, projected on a huge wall, drew our attention.

The large group was divided into two vans that brought us to the 40-acre park-like property some distance away, on which the house is situated. The vans dropped us off inside a striking 20-foot-high entrance gate, fashioned out of a sailboat boom. Since the grounds are hilly, some in the Finch group were taken by golf cart to visit the Modernist buildings toured.

The beautifully landscaped property, designed and executed by Johnson's life and creative partner, David Whitney, was inspired by a Nicolas Poussin painting (*The Funeral of Phocion*). Johnson once famously said of the stunning landscape: "I have very expensive wallpaper!" The painting, which



Inside "Da Monsta": (left to right): Tour guide, Marjorie Schulman, Suzanne Stern Salomon, Susan Rubenstein Reed (Tom Miller), Hideaki Nakamura, and Rena Niculescu Crisp.

echoes the hilly surrounds, is on prominent display in the Glass House on a coffee table, one of several pieces of furniture designed by Mies van der Rohe. A small version of Elie Nadelmen's *Two Circus Women* – the larger version of which is in Lincoln Center – graces a stand opposite.

The minimalist, austere glass structure, with its steel beams and thin brick base, took Johnson (a curator at the Museum of Modern Art) three years to design; it garnered recognition not only in architectural circles, but also among the public, when he moved there in 1949. It had been inspired by Mies van der Rohe's *Farnsworth House* (although the Glass House was completed one year earlier, causing additional controversy—as

*Continued on next page* ►



Frank Stella's "Das Erdbeben in Chili" (The Earthquake in Chile), a 40-foot painting, acrylic on canvas, 1999.

though living in a glass house were not enough!). Only the bathroom is completely enclosed, in a brick floor-to-ceiling cylinder, the other side of which is a fireplace; low walnut cabinets separate a kitchen area and a bedroom area. Johnson initially lived alone there; later the building was used primarily for entertaining, and he and Whitney moved into the Brick House. Johnson spent his last days in the Glass House.

The Brick House, like all of the other structures in the complex, balances rectangular and circular elements, with its two porthole windows, circular concrete pool-like sculpture by Donald Judd, and two circular pools on either side. The terraced grounds, outdoor sculpture, a pavilion on a pond, and a monument to Lincoln Kirstein were breathtaking to behold. We passed the whimsical building that had been Johnson's study/library before spending time in the bunker-like underground painting gallery, the entrance of which resembles the Bronze Age Treasury of Atreus. Built in 1965, the gallery houses a vast collection of contemporary paintings collaborated by Johnson and Whitney, displayed vertically in three circles that rotate 360 degrees. There were many works by Frank Stella, but three important pieces were on loan to the new Whitney Museum, which we would have the opportunity to visit later in the Fall.

Our final stop was the brightly painted asymmetrical Brutalist building with irregular walls, "Da Monsta." Sculptural itself, it now houses large sculptures, featuring those of John Chamberlain, Robert Morris, and Robert Rauschenberg. Situated just inside the entrance gate, Da Monsta was originally intended as the visitors' center when it was completed in 1995.

After returning to the visitors' center in town, we gathered at the lovely home of Susie Salomon in Rowayton, Connecticut, where we enjoyed the

ocean view and an elegant luncheon.

### *The 27th Annual International Show*

**The 27th Annual International Show** (formerly the International Fine Art & Antiques Show), directed by Brian and Anna Haughton at New York's Park Avenue Armory, drew Finch graduates and friends from far and wide on October 25. Among the attendees were **Mary Campbell Appleby** and her husband, Addison, here on a visit from their home in La Jolla, California; and **Dr. Laura Stober Larsen** (Cosgrave Honoree 2011), from Baton Rouge, Louisiana and New York City. The special private tour for Finch, which highlighted some of the finest work at the show, was organized by alumna (and Cosgrave Honoree 2002) **Ceil Gavin Ainsworth**.

Carefully curated and vetted, the international show featured extraordinary collections of fine art including paintings, sculpture, and photography; porcelains, silver, jewelry, furniture, folk art; and antiquarian books, periodicals, and prints. The range of museum-quality work spanning continents and centuries was really awe-inspiring; the informative tour was reminiscent of art history classes at Finch.

After the tour, several of the Finch alumnae and friends gathered at the stylish pop-up venue of Swifty's restaurant in a separate area of the main floor to share conversation and a light meal before returning to the show, or home.

### *Mason Griffin Recital*

On the evening of November 12, a large group of Finch alumnae, faculty, and guests gathered at the beautiful Upper West Side apartment of Finch alumna, **Ginger Runes Najar**, for a recital. Organized also by **Frances Fish Tompkins**, Finch alumna (and Cosgrave Honoree 1997), it

was a memorable soiree. The attendees were enthralled by the talented young music director / pianist Mason Griffin's presentation of his show **No Blue Monday**, a biographical musical presentation of the life and music of Jerry Herman. Herman, the 84-year-old American composer and lyricist known for his romantic, joyful, and often ground-breaking work in musical theatre, composed scores for *Hello, Dolly!*, *Mame*, and *La Cage aux Folles*, among other beloved Broadway hits. With nothing more than a piano, Mr. Griffin sang and narrated an intimate portrait of Herman's personal struggles (professional setbacks and struggles as a gay man with HIV) and great successes. Mason's presentation of tunes such as "It Only Takes a Second," "I Won't Send Roses," and "I Am What I Am" touched everyone's hearts.

The evening began and ended with a delightful and generous offering of delicious dinner fare and drinks by our host, Ginger.

### *Whitney Museum of American Art Tour*

On November 13, Finch alumnae and friends toured the new **Whitney Museum of American Art**, in Manhattan's meatpacking district, to view the nearly 120 works of one of this country's greatest living modern artists, Frank Stella. Our private one-and-a-half hour tour and lecture of "**Frank Stella: A Retrospective**," conducted by a Whitney Teaching Fellow, had been organized by Finch alumna and former Finch newsletter publisher, **Joy Corregge**.

After assembling in the vast ground-floor lobby, where we received headphones, the group followed our guide to the exhibition halls upstairs in whose open spaces were many of Stella's best-known works, alongside lesser-known ones from private collections. There, we were also able to see the three formidable works on loan from the Glass

*Continued on next page ▶*



At the Glass House (left to right): Denise M. Decker, Susan A. Mintz, Lois M. Ziegler, Dr. Janice Lieberman, Nina D. La Bruna, Carol B. Ross, and Natalie Skeet.

House: “Effingham II” (1966, a colorful acrylic on canvas); “Granjau I” (1975, paint and lacquer on aluminum); and “Raft of the Medusa (Part I)” (1990, an imposing [“hulking” according to some press] sculpture of aluminum and steel).

As we followed our guide through the museum’s fifth-floor, 18,000-square-foot gallery, we witnessed Stella’s evolution from his early post-abstract expressionist work of the late 1950s, when he had burst onto the art scene at the age of 23, right after graduating from Princeton (with work in the Museum of Modern Art and a show at the renowned Leo Castelli Gallery), to his current, massive sculpture. Stella had learned to paint using a palette knife; later part-time work as a house painter led him to use Benjamin Moore house paint and commercial enamels and brushes to execute his geometric Black Painting series, subsequent aluminum and copper paintings, and his shaped zig-zag, polygon, and protractor paintings a decade later. Stella referred to his early works using humble materials as “humorous pedestrianism”; and, to their minimalist nature, his catchphrase: “What you see is what you see.”

After a brief hospitalization, Stella created his Polish Village series (1971-73), which comprises “sculptural paintings” made of canvas and felt and, later, plywood, pressboard, and masonite mounted



Temple St. Clair’s watercolors for her jewelry.



Finch alums and friends at the home of Ginger Runes Najjar. Mason Griffin at the piano.

on wood. Increasingly, by the mid-1970s, as painting was falling out of fashion, Frank Stella’s response was to create muscular paintings with steel and aluminum. By the next decade, he was incorporating more and more disparate materials for recycling into paintings; the work became ever larger, and so did his studio. In fact, our guide informed us, Stella’s current studio, in upstate New York, is one acre in size!

We stopped in a huge space dedicated to Stella’s iconic “Moby Dick” series, which had taken



Finch group at Salon admiring Barnaby Bradford’s “Fox5 & Cubs.”



Finch alumnae and their daughters at the Jerry Herman music event. (Left to right) Ceil Gavin Ainsworth and daughter Susie Ainsworth; daughter Eugenie Gumolka and mother Michele Brown Sibeud.

the artist over a decade to create (1986-97) and incorporates marathon readings from Melville’s novel. Stella’s piece is considered a “metaphor for [his] Ahab-like fixation on the nature and future of abstraction.”

From there, we crossed the entire floor to a space where a wall of windows face the Hudson River, and Stella’s huge, recent sculptures were installed (including his Scarlatti series and the above-mentioned “Raft of the Medusa (Part I).” They represent another phase in Stella’s evolution; utilizing up-to-the-minute technology and post-industrial materials, they are simultaneously epic and raw. Our final stop as a group was outside to the fifth-floor terrace, where we experienced Stella’s 2014 “Black Star” and “Wooden Star” against the gathering sunset.

After the tour, a number of Finch attendees enjoyed dinner, drinks, and stimulating conversation while taking in the spectacular view from the famous rooftop eatery of the Standard Hotel.

*Continued on page 8* ▶

# CLASS NOTES



Dale Levine Finkelstein (left) and classmate Toni Walker Hamner (right).

## 50s

**Joanne Balch Thomas** (Finch Class of 1958) writes:

“Graham and I are still busy at Ocean Reef (Key Largo, Florida). We have been here year-round for 8 years and love it. We travel in the summer some when it is “high” hurricane season – have been lucky in this area the last few years, with nothing bad. We have two dogs who are great companions. My kids (Hillary lives in Boston with a daughter, Tasha, who is a junior in boarding school; Flip, his wife, and 3 children [Nick, 27; Sage, 24; and Cole, 13] live outside of Denver) both get here often and we also visit them. Graham’s kids are spread all over: a son with a wife and two children in Calgary; a daughter with a husband and two children in Antibes, France; and a son with a wife and two boys in Brisbane, Australia. His daughter will be here this spring with her family. We have not made many plans for this summer yet—only a cruise to Alaska in August. We play a lot of bridge—Graham plays golf and tennis. My tennis is

nonexistent at the moment because of knee problems, but I hope to return to it eventually. I also play a lot of canasta and mahjonn. We are busy all the time! We are lucky to live in a community with a good medical center and a cultural center that has current movies and shows (we just saw *Capitol Steps* - a good year for their political satire!). We also have an Art League with classes and shows. We have a variety of good restaurants—I think I am forgetting how to cook as we eat out a lot! So life could not be better.”

## 60s

**Susan Cole**, real estate broker and certified riding instructor, has published a memoir about a cat named Rebecca.

**Wesley Cullen Davidson’s** (Finch Class of 1969) book, *When Your Child Is Gay*, is being released in June by Sterling, owned by Barnes & Noble. Co-authored with a psychiatrist, it deals with the issues that arise for straight parents of LGBT children and how to resolve them.

## 70s

In January 2016, **Toni Walker Hamner** (Finch Class of 1973) had lunch with her Finch friend and former roommate, **Dale Levine Finkelstein** (Finch Class of 1973) in Raleigh, North Carolina. Toni has also been in touch with Finch friend **Jessica Morrissey** (Finch Class of 1973).

Toni Hamner also recently held a fundraiser cocktail party for Patrick Murphy, US Representative for Florida’s 18th Congressional district since 2013. Formerly a Republican, Patrick is running for Marco Rubio’s Senate seat.

**Paula DiBenedetto** of Paula and Martha, award-winning designers with a bicoastal firm, was an Interior Design Committee Member of the prestigious Winter Antiques Show held at The Park Avenue Armory. Formerly with Naomi Leff & Associates, Paula sent an email blast reminding all of Young Collector’s Night at this year’s show, which was held during the Antiques Show that ran from January 22-31, 2016. Young Collector’s Night benefits The East Side Settlement House, which motivates and guides Bronx high school students to graduate and pursue a college degree.

Also at the Winter Antiques Show were Philip Colleck, Ltd’s owners and partners **Diana O’Rourke** and husband Mark Jacoby. Founded in 1938, Colleck has extraordinary 18th Century English furniture as well as works of art. Their popular booth also displayed a richly colored screen which artist Diana described as a “bit of Oriental inspiration,” according to admirer **Lois Ziegler**.

On February 11, 2016, **Alba Farber Francesca** produced Hal Holbrook in his legendary one-man show, *Mark Twain Tonight!*, at the Broad Stage in Los Angeles, California, as a benefit for The Actors Fund. At the age of 91, Mr. Holbrook kept his sold-out, celebrity-studded audience enthralled. He was an inspiration to all in attendance.

Professional Organizer since 2008, **Wendy Glickstein** (Finch Class of 1970) has joined the Board of Eviction Intervention Services (EIS), a Manhattan nonprofit whose goal it is to keep all

*Continued on next page* ▶

## Please Contribute to the Finch Newsletter

This is YOUR newsletter. Everyone is anxious to hear of your news: whether it be a job, hobbies, contacts, moves, grandchildren, children, etc. When you provide your updates, please include your maiden name and years of attendance at Finch. It not only helps our database, but also your placement according to your year of graduation in the Class News. Thank you!



Ellen Easton (left) and Elba Vargas (right) at the Lowell Hotel tea in 2015.

people – especially seniors, hoarders, the homebound, and the physically and/or mentally impaired – in their own apartments. Through her professional group, The National Association of Professional Organizers (NAPO), Wendy led a group of NAPO-NY volunteers who organized the office of EIS as part of the annual January GO (“Get Organized”) Month. To learn more about Wendy’s world of professional organizing, visit her website: [www.reallyneatorganizer.com](http://www.reallyneatorganizer.com).

On November 17, 2015, Finch alumnae **Elba Vargas** and **Jessica Redel** attended an afternoon tea at the Lowell Hotel in New York City to hear classmate and author **Ellen Easton** speak on the power of women.

In January-February 2016, Finch alum and New York artist **Nancy Azara** presented *Tuscan Spring: Rubbings, Scrolls and Other Works*, an exhibition of recent work, at the A.I.R. Gallery in Brooklyn, New York.

In *Tuscan Spring*, Nancy Azara uses a “leaf” theme with scroll works on Mylar, made in Greve, Italy. The collaged scrolls with tracings of leaves and trees and marks made from woodcuts are painted and slashed sections, cut out and often reversed and glued. The leaves are from a New York domestic rhododendron plant as well as from the fields of the Tuscan countryside.

**Barbara Joyce Hummel** (now Barbara Marvin Wayne (who attended Finch from 1972 to 1975), has written *Tales From Moonfire*, a compilation of “tales based on the universal pursuit

of Love, a journey of culture and time.” She currently lives in Topanga, California.

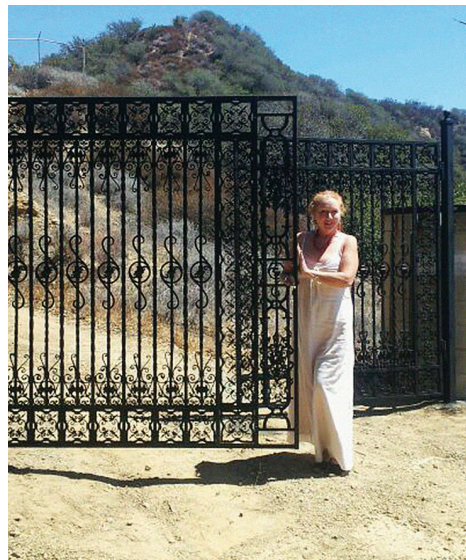
## Faculty

**John H.B. Knowlton**, who taught art history at Finch during the mid-1960s, died two years ago, at age 99. What a full life he led! A painter himself, Dr. Knowlton, born in 1914, graduated from Dartmouth College, served in the Navy, and earned a PhD from New York University (School of Fine Arts).

A wonderful teacher and dapper mustachioed gentleman, Dr. Knowlton taught at Sarah Lawrence College, Michigan State, and University of Iowa. After leaving Finch College, he taught at Connecticut College from 1967 until 1983.

Another well-liked teacher, **Isaiah Sheffer**, died in 2012 at the age of 76. An accomplished actor, director, and writer of Off-Broadway plays and musicals, he hosted the popular WNYC program *Selected Shorts* and co-founded *Symphony Space* in Manhattan. His papers are now at the New York Public Library for the Performing Arts.

Finch graduate **Julie Vasques Horns** (Finch Class of 1975) fondly remembers his theatre/acting class from her freshman and sophomore years. Sheffer also taught an acting class with George Segal that Julie attended at Columbia University during her freshman year.



Barbara Marvin Wayne at the 19th-century gates to Moonfire Ranch, her home in Topanga, California.

## Finch College Alumni Association Foundation Trust

### BOARD OF TRUSTEES 2016

Ceil Gavin Ainsworth  
Elizabeth (Liz) Glick Colin  
Donna Miller Casey  
Joy Corrage  
Wesley Cullen Davidson  
Susan Davis  
Denise Mularoni Decker  
Cheryl Young Deknatel  
Alba Farber Francesca  
Wendy Glickstein  
Laura Hockaday  
Barbara H. Katsos, Esq.  
Magda Stark Katz  
JoAnn Cricchio Kubat  
Susan Embree Parker  
Marjorie R. Schulman  
Virginia Wattiker Sheerin  
Eileen Bluestone Sherman  
Rita Thompson  
Frances Fish Tompkins  
Lois Moran Ziegler

#### Scholars

Zineb Bouizy  
Danielle Jablonski

### OFFICERS 2016

**Joy Corrage**  
Vice President  
**Susan Davis**  
Vice President  
**Wendy Glickstein**  
Vice President  
**Magda Stark Katz**  
Vice President  
**Susan Embree Parker**  
Vice President  
**Marjorie R. Schulman**  
Treasurer

### Chair Scholarship Committee

Lois Moran Ziegler

### FINCH NEWS

**Jill Waldheim Chamberlain**  
Publisher  
**Wendy Glickstein**  
Editor  
**Laura Hockaday**  
Feature Editor  
**Wesley Cullen Davidson**  
Class Notes  
**Magda Stark Katz**  
Contributing Editor  
**Margaret Stein Nakamura**  
Contributing Editor  
**Eileen Bluestone Sherman**  
Contributing Editor

## In Memoriam

Our heartfelt condolences to television producer and Finch graduate **Amy Hirsh**, whose husband, **Wayne Rogers**, died at the age of 82 this past New Year’s Eve. Wayne was best known for his role as Dr. John McIntyre, aka Trapper John, in the irreverent comedy *M\*A\*S\*H*. An actor in feature films as well, Wayne, in later years, had a successful career as a money manager, real estate developer, and investor.

# 2016 COSGRAVE AWARD HONOREES NAMED

Five outstanding women, a former Finch faculty member and four alumnae, will be recognized at the 22nd annual Jessica Cosgrave Lifetime Achievement Awards, Tuesday, May 17, 2016, at the Cosmopolitan Club, 122 E. 66th St. The event begins with a reception at 6 p.m., presentation at 7 p.m. and dinner at 8 p.m.

The Cosgrave honorees:

**Dr. Janice S. Lieberman**, psychologist/psychoanalyst, taught at Finch from 1971 to the college's closing year in 1975. She was born and grew up in Kew Gardens, Queens, N.Y. After graduating from Forest Hills High School, she attended Wellesley for a year, transferred to Barnard, where she studied psychology and art history, earning her B.A. in 1962. She followed that with a Ph.D. in psychology from NYU's Graduate School of Arts and Sciences. Janice has two married sons and four grandsons. She has maintained a private practice in her New York home on East 87th St. while serving as a docent for the Whitney Museum for 27 years.

**Dale Anne Bourjaily**, was at Finch (1968-70) when she met her (late) first husband, got married and moved to The Netherlands, where she still lives. She remarried, has children and grandchildren. She is recognized as a pioneer in connecting sustainable organic products with major companies, such as Tropicana and Kellogg's, whose trade brings profits for farm co-ops and

inspires new modern factories. And instead of cutting down rain forests, she seeks to discover medicines made from them. Her efforts to feed, clothe and educate children in Latin America and the Caribbean have helped more than 3,500 in nine countries.

**Peggy Flaxman Millheiser**, has been a leader in her native Dallas, Texas, in many areas, including education, religion and real estate. She has achieved a multi-million dollar ranking in her real estate profession and is known for her expertise in historic preservation. She is a certified Historic Home Specialist. Peggy has been a member of both Dallas and New York Junior Leagues, while also volunteering for elementary and high school projects, the National Council of Jewish Women and many art-oriented civic programs. She attended Finch from 1972 to 1975, graduating with a bachelor's in art history.

**Rita Castora O'Hare**, of Paramus, N.J., earns high praise from her former Finch College Spanish professor, Dr. Katherine J. Hampares, a Cosgrave honoree in 2014 and scholarship donor: "She was a teacher's dream come true." Rita attended Finch from 1966-70, receiving a B.A. in Modern Languages and later a Master of Arts in Teaching from New Jersey City University. For her 34 years of teaching in New Jersey secondary schools, she was honored with the 1990 Governor's Teaching Award. Now retired and a new grandmother, Rita

used to inspire students with rap music and guacamole recipes – all in Spanish. They loved it.

**Susan Rubenstein Reed**, an entrepreneur on multiple levels, has a degree in psychology from Finch (1967-69). To start her own business several years ago, she hired a chef, found a kitchen and began baking gourmet fortune cookies for any occasion. Her Sweet Fortune Cookies company in Rochester, N.Y., is a dramatic success. Much earlier she had been Director of Gerontology at Rowan University, formerly Glassboro State College in New Jersey, bringing older adults to the campus to learn with young students. She later established a room for children to explore art on their own, in the Memorial Art Gallery, University of Rochester.

Guest speaker for the 2016 Cosgrave Awards is **Dr. Gail O'Connor Mellow**, President of LaGuardia Community College in Long Island City, New York. She has held several leadership positions including that of president of Gloucester County College just prior to her current position. She has served on numerous boards such as the Homeland Security Academic Advisory Council, American Association for Higher Education, the National Commission for Cooperative Education, and the Community College Research Center at Columbia University.

*Article: Laura Hockaday*

## Fall Events

*Continued from page 5*

### *The Salon: Art + Design Fair*

Many thanks to **Ceil Gavin Ainsworth** for organizing the third annual tour of **The Salon: Art + Design** fair at the Park Avenue Armory, on Sunday, November 15. The show hosts 55 of the finest galleries from around the world, specializing in historical, modern, and contemporary art and design, with an emphasis on current and avant-garde work. Featured were stunning collections of jewelry and furniture from the great cabinet makers of 18th-Century France to English Arts & Crafts, Art Deco, and Mid-Century Modern to today's exciting designers.

The chic partners and sponsors of the show included Ferrari, Kusmi Tea, and the acclaimed

Ruinart Champagne. Our VIP guest passes also included a visit to the collector's lounge.

One highlight of the tour was the guide herself: **Temple St. Clair**, whose own collection of jewelry (bejeweled fantasy creatures, made of gold and precious gemstones, exquisitely crafted) and the lovely watercolor sketches that inspired them was on display in the historic library of the Armory. But first we walked the entire Salon show with Ms. St. Clair, who helped us see how contemporary artwork, whether made of humble or extravagant material, blurs the boundaries between art and design and tends to be witty, whimsical, or ironic. The tour began with a cutting-edge work in prominent display ("Ruinart," a sculptural painting made of multiple layers of glass, forming a three-dimensional collage) created by Brooklyn artist Dustin Yellin, and "Fox5 & Cubs" (2014) by Barnaby Bradford, represented by David Gill Gallery, London. Initially ador-

able and fluffy looking, Fox5 & Cubs, like much of the work in The Salon, is upon closer inspection bitterly ironic: the foxes are made of stainless steel, enameled wire, and ceramic chips resembling newsprint that details the London bombings of 2005. We followed through gallery upon gallery of wonderful, sometimes shocking artwork and furniture-as-sculpture, as well as more traditional painting and decorative works.

The tour ended in the library, to see St. Clair's haute couture show, "Wings of Desire," the second chapter of her Golden Menagerie trilogy. Each piece of jewelry – in addition to her watercolors – was a work of art, crafted by the centuries-old Florentine jewelers' guild. The Finch attendees then gathered in the collector's lounge, where we enjoyed tea and champagne, as well as a photo op with the bright red Ferrari that was prominently parked in the hall.

*Article and Photographs: Margaret S. Nakamura*

## Welcome to the New Finch Board Co-Chairman

A warm welcome to Elizabeth (Liz) Glick Colin, who has graciously accepted the co-chairmanship of the Finch Board of Trustees and will serve with Ceil Gavin Ainsworth. Liz entered Finch her senior year. She has made a career of publishing and distributing brass and jazz music books through her dealers throughout the United States and Europe.



# IN THE SPOTLIGHT: RITA THOMPSON

Native New Yorker, **Rita Thompson**, has fond memories of her alma mater, Finch College, and of Drs. Jean Ellis, Ruth Elson, Margaret Maxwell, and Ardelle Striker – the professors who most influenced and inspired her there from 1968 to 1972. In 1980, eight years after receiving her Bachelor of Arts degree in history and government, she went on to receive a Masters of Science degree in journalism from the Columbia University Graduate School of Journalism.

As one of the editors of Finch's newspaper, she "caught the journalism bug" during her years spent at Finch. Upon graduation, she worked at *New York* and *Rolling Stone* magazines before moving to Boston for eight years to work as field producer for the TV news magazine, *CHRONICLE*. After that, she returned to New York to work at CBS-TV where – among many other global assignments in her capacity as Field Producer – she led two crews to Petrozavodsk, Russia for an *AMERICA TONIGHT* feature on American police officers invited by Russian police to share their crime-fighting expertise. When the show was cancelled after one season, a friend suggested she apply for a job with Oprah Winfrey's company, Harpo Productions; she did, and was soon hired as Senior Field Producer at Harpo Studios for the Oprah Winfrey Show in Chicago, the city she would soon call home for the next twenty years. Some of her most memorable Oprah show assignments were: a day in the life of Tony Bennett; a visit inside Martha Stewart's chicken coop; a private tour of the late Princess Diana's brother, Lord Charles Spencer's, priceless family art collection; a poignant visit at Ground Zero with a father who lost both sons on 9/11; and an interview with a reformed racist.

In December 2015, Harpo Studios closed its doors for good. Choosing not to relocate yet again (this time, to Los Angeles, where the Oprah Winfrey Network is based,) she moved back to New York early this year and says she is now in the process of "reinventing" herself with a view toward achieving and maintaining a healthy work/life balance. Her Manhattan passions include dance, theatre, and favorite museums like The Frick and The Met. She would also welcome



the opportunity to speak with elementary school children about the importance of a good education. Rita is currently looking forward to participating in some of the interesting New York Finch

events she could only read about while living in Chicago.

*Article and Photograph: Wendy Glickstein*

## We Need Your Email Address!

If you have an email address, please share it with us to ensure better communication among Finch alumni and to save significantly on costs associated with printing and mailing the newsletter and other updates. This information will not be used for any purpose other than Finch-related communication. Please send your email address to Wesley Cullen Davidson ([wcdwrite@aol.com](mailto:wcdwrite@aol.com)) with the following subject line: Finch alumna email.

# LINDA PURL HEADLINES MUSICAL BENEFIT FOR FINCH

With Tedd Firth as the show's musical director, the multi-talented actress, singer, and Finch alum Linda Purl presented "Up Jumped Spring! Celebrating Life's Unexpected Turns" at the Metropolitan Room in New York City on March 22, 2016, to benefit the Finch College Alumni Association Foundation Trust.

Linda's recent running roles on television series have included *Reckless*, *Homeland*, *The Office*, and *True Blood*. She has starred in more than 45 made-for-television movies and is especially known for her series roles as Charlene Matlock on *Matlock* and Ashley Pfister, Fonzie's fiancée, on *Happy Days*. Linda has also starred in numerous plays and musicals on Broadway as well as in regional theatres across the US.

Concert venues have included Jazz at Lincoln Center; Feinstein's, NYC; Naples Philharmonic; Satin Doll, Tokyo, Japan; and Princess Grace Theatre, Monaco. Her solo albums are *Alone Together*; *Out of This World—Live*; and *Midnight Caravan*.

Linda greeted her fellow Finch alums after the show.



Finch alum Linda Purl presented a wonderful evening of song to benefit Finch.

## Visit the Finch College Alumni Association Website

Be sure to visit the Finch College Alumni Association website: [www.finchcollege.org](http://www.finchcollege.org). You'll find information about upcoming events, classmates and professors, membership, scholarships, and much more. There are lots of photos, too!

# Join the Fall Finch Tour to Hawaii



Aloha, Finch Alumnae!

A Finch tour to Honolulu from October 31-November 6, 2016 is in the planning stage. Finch alumnae, friends of Finch members, and spouses/companions are welcome.

Tours may include:

**Shangri-La**, the private retreat of American tobacco heiress, art collector, and philanthropist Doris Duke. The home, near Diamond Head, houses an impressive collection of Islamist art. Lunch to follow at the tranquil Honolulu Museum of Art Café.

**Manoa Heritage Center**, an historic site with the remains of an agricultural temple, including a Tudor-style home built by a missionary family and native Hawaiian gardens.

**Lyon Arboretum**, a 200-acre botanical garden, nestled deep in Manoa Valley, featuring an extensive tropical plant collection.

**Iolani Palace**, the only official royal palace in the United States, where you can learn about Hawaii's royal heritage.

**Garden Tour** of 3 private homes in lush Nuuanu Valley. Lunch to follow at the Oahu Country Club with spectacular views of downtown Honolulu.

**Pearl Harbor and the Arizona Memorial**, with a moving historical documentary preceding a short boat ride to the memorial.

**Bishop Museum**, the Hawaii State Museum of Natural and Cultural History with the world's largest collection of Polynesian cultural artifacts. Lunch to follow at the Pacific Club, founded in the 1800s.

**Hanauma Bay**, formed within a volcanic cone, and the **Nuuanu Pali**, with panoramic views of the sheer Koolau cliffs and windward coast. Lunch at Waialae Country Club, site of the Sony Open golf tournament.

**Oceanside Hawaiian Dinner** at the Outrigger Canoe Club, and cocktails and dinner at the Halekulani Hotel, one of the premier resorts on Waikiki Beach.

## Accommodations

Guests will be staying at the recently remodeled (New Otani) Kaimana Beach Hotel, approximately 15 minutes from bustling Waikiki. Preview the room gallery at [www.kaimana.com](http://www.kaimana.com). Call toll-free at 1-800-356-8264 and indicate "Finch Alumni" for special rates in four different categories. Hotel group rates are effective until October 1, 2016, but rooms are based on space availability.

## Ground Tour

The estimate for ground tour costs (ie, transportation to sites, admission tickets, guides, and most meals) will range from \$2500 to \$3750 per person, exclusive of air and hotel. Final ground costs will be determined based on the number of participants. Also, a minimum donation of \$100 to the Finch College Alumni Association Foundation Trust is requested.

*If you have interest or any questions, please contact Susan Mau Soong, Finch Class of 1971, at [jlsoong@aol.com](mailto:jlsoong@aol.com), by **May 25**.*

# HAVE YOU PAID YOUR 2016 DUES YET?

The Finch College Alumni Association Foundation Trust needs your support to carry on its mission of granting scholarships to worthy candidates. Annual dues are \$50; lifetime membership is \$300. You can also have your friends and associates join as Friends of Finch. Dues are \$50 a year or \$300 for a lifetime membership. Your dues and donations are tax deductible, since we are a nonprofit 501(c)3 organization. Just go to the Finch College website [www.FinchCollege.org](http://www.FinchCollege.org) and click on Membership on the left of the home page to download a form and join. You can mail the form along with your dues to:

**Finch College Alumni Association Foundation Trust**  
**954 Lexington Avenue, #183**  
**New York, NY 10021**

---

## **New Lifetime Member**

C. Susan Warren

## **Major Donors**

Ceil Gavin Ainsworth  
Mary Appleby  
Dr. Sara Arthur  
Mary Beth Baker Busby  
Joan K. Bick  
Charlotte Blumencranz  
Joy A. Correge  
Wesley Cullen Davidson

Denise Decker  
Juliet Messenger Gede  
Dr. Carol Hawkes  
Phyllis Heard  
Georganne Heller  
Laura Hockaday  
Julie Horns  
Dr. Diane Kelder  
Barbara Long  
Susan R. Reed  
Ruth Rothseid  
Charlene Rubin  
Christa Thurman Sala

Suzanne S. Salomon  
Margaret Sandberg  
Virginia Wattiker Sheerin  
Marcy Syms  
Rita Thompson  
Frances Fish Tompkins  
Wilma Wiesenmaier

## **Friends of Finch Donors**

Nancy Leeds  
Hilary Ney  
Hedy Zankel

---



Finch College Alumni Association Foundation Trust  
954 Lexington Avenue, #183  
New York, New York 10021